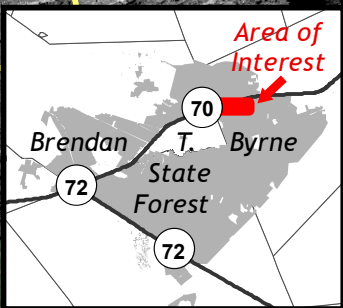
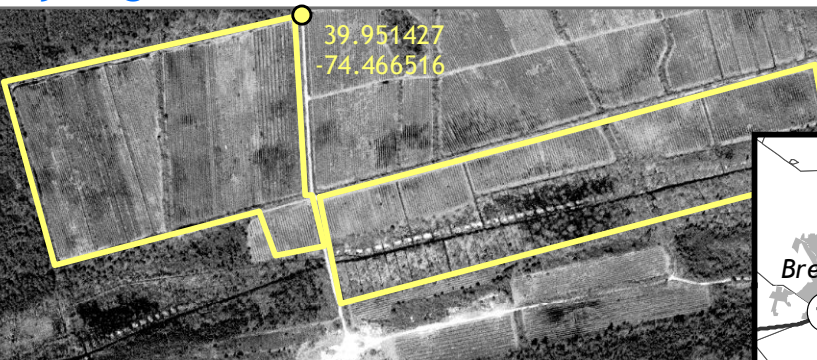


Blueberry Bog Restoration to Atlantic white cedar

1987

Site still in commercial production. Note that the fields that will be restored are being managed the same way as those that will not.



1995-1997

Site has been drumchopped and herbicided to control competition. Along waterways cutting done by hand. Seedlings planted, and deer fence installed along yellow line. Note that not all the area within fence has been treated.



2002

Five years later, seedlings have established. Slight growth visible from air.



2007

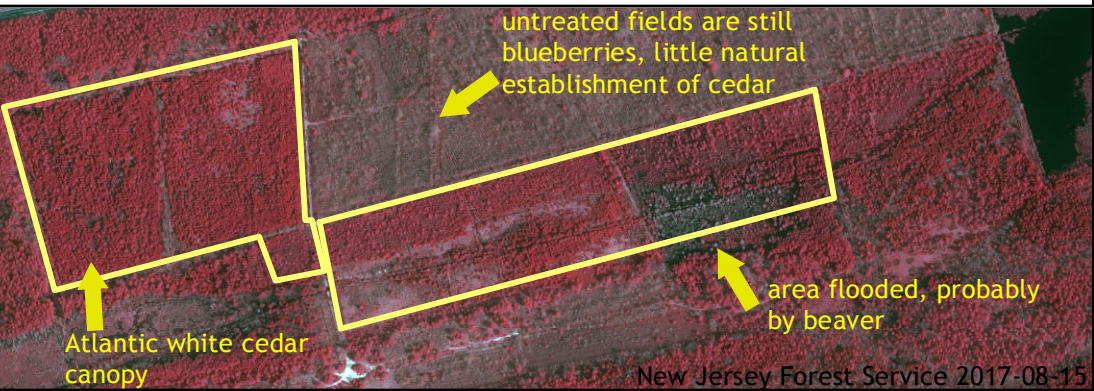
Eleven years on, seedlings have established. Growth visible from air, with canopies still not completely closed.



NJDEP, BGIS

2015

Nineteen years after planting, a solid, vigorous cedar forest has established itself. The microenvironment, soils, and forest structure are similar to naturally-started cedar forests. This blueberry field has been successfully restored.



New Jersey Forest Service 2017-08-15

Bottom four images are false-color infrared; in this type of display, vegetation is displayed as red.